

Almost All Even Yao-Yao Graphs Are Spanners*

Jian Li¹ and Wei Zhan²

- 1 Institute for Interdisciplinary Information Sciences, Tsinghua University, Beijing, China
lijian83@mail.tsinghua.edu.cn
- 2 Institute for Interdisciplinary Information Sciences, Tsinghua University, Beijing, China
zhanw-13@mails.tsinghua.edu.cn

Abstract

It is an open problem whether Yao-Yao graphs $\Upsilon\Upsilon_k$ (also known as sparse-Yao graphs) are all spanners when the integer parameter k is large enough. In this paper we show that, for any integer $k \geq 42$, the Yao-Yao graph $\Upsilon\Upsilon_{2k}$ is a t_k -spanner, with stretch factor $t_k = 6.03 + O(k^{-1})$ when k tends to infinity. Our result generalizes the best known result which asserts that all $\Upsilon\Upsilon_{6k}$ are spanners for $k \geq 6$ [Bauer and Damian, SODA'13]. Our proof is also somewhat simpler.

1998 ACM Subject Classification F.2.2 Nonnumerical Algorithms and Problems, I.3.5 Computational Geometry and Object Modeling

Keywords and phrases Yao-Yao graph, geometric spanner, curved trapezoid

Digital Object Identifier 10.4230/LIPIcs.ESA.2016.62

1 Introduction

Let \mathcal{P} be a set of points on the Euclidean plane \mathbb{R}^2 . A simple undirected graph $G = (V, E)$ with vertex set $V = \mathcal{P}$ is called a *geometric t -spanner*, if for any pair of vertices (u, v) there is a path $uu_1 \dots u_s v$ in G such that the total length of the path $|uu_1| + |u_1u_2| + \dots + |u_s v|$ is at most t times the Euclidean distance $|uv|$, where t is a constant, called the *stretch factor*. The concept of geometric spanners was first proposed in [7], and can be considered as a special case of general graph spanners [21] if we consider the complete graph with edge lengths defined by the Euclidean metric.

Yao graph was first introduced by Andrew Yao in his seminal work on high-dimensional Euclidean minimum spanning trees [23]. Let $C_u(\gamma_1, \gamma_2)$ be the cone with apex u and consisting of the rays with polar angles in $[\gamma_1, \gamma_2)$. Given a positive integer parameter k , the construction of Yao graph Υ_k is described in the following process.

Initially Υ_k is an empty graph.
For each point u :
 For each $j = 0, \dots, k - 1$:
 Let $C = C_u(2j\pi/k, 2(j + 1)\pi/k)$;
 Select $v \in C \cap \mathcal{P}$ such that $|uv|$ is the shortest;
 Add edge \overrightarrow{uv} into Υ_k .

* JL and WZ are supported in part by the National Basic Research Program of China grants 2015CB358700, 2011CBA00300, 2011CBA00301, and the National NSFC grants 61033001, 61361136003.

In the above process, ties are broken in an arbitrary but consistent manner. The above process is usually referred to as a “Yao step”. Note that the edges \vec{uv} we added are directed edges (the directions are useful in the construction of Yao-Yao graphs).

Besides the usefulness in constructing minimum spanning trees, Yao graphs are also sparse graphs with surprisingly nice spanning properties. It is known that Yao graph Y_k has a stretch factor $(1 - 2 \sin(\pi/k))^{-1}$ when $k \geq 6$ (see e.g., [18] and [5]). Later, the spanning properties of Y_4 , Y_6 and Y_5 are proved in a series of work [10, 11, 2]. Due to the spanning properties and the simplicity of the construction, they have important applications in networking and wireless communication; we refer to [20] and [16] for more details.

One may notice that a Yao graph may not have a bounded degree. This is a serious drawback in certain wireless networking applications, since a wireless node can only communicate with a bounded number of neighbors. The issue was initially realized by Li et al. [18]. To address the issue, they proposed a modified construction with two Yao steps: the first Yao step produces a Yao graph Y_k , and the second step, called the “reverse Yao step”, eliminates a subset of edges of Y_k to ensure the maximum degree is bounded. The reverse Yao step can be described by the following procedure:

Initially YY_k is an empty graph.

For each point u :

For each $j = 0, \dots, k - 1$:

$C = C_u(2j\pi/k, 2(j+1)\pi/k)$;

Select $v \in C \cap \mathcal{P}$, $\vec{vu} \in Y_k$ such that $|uv|$ is the shortest;

Add edge \vec{vu} into YY_k .

The resulting graph, YY_k , is named as “Yao-Yao graph” or “Sparse-Yao graph” in the literature. The node degrees in YY_k are clearly upper-bounded by $2k$. It has long been conjectured that YY_k are also geometric spanners when k is larger than some constant threshold [18, 16, 3]:

► **Conjecture 1.** *There exists a constant k_0 such that for any integer $k > k_0$, YY_k is a geometric spanner.*

In sharp contrast to Yao graphs, our knowledge about the spanning properties of Yao-Yao graphs is still quite limited. Li et al. [18] proved that YY_k is connected for $k > 6$, and provided extensive experimental evidence suggesting YY_k are indeed spanners for larger k . Jia et al. [14] and Damian [9] showed that YY_k is spanner in certain special cases (the underlying point set satisfies certain restrictions). It is also known that for small constant k 's, none of YY_k with $2 \leq k \leq 6$ admits a constant stretch factor [2, 10, 13]. Recently, a substantial progress was made by Bauer and Damian [3], who showed that YY_{6k} are spanners with stretch factor 11.76 for all integer $k \geq 6$ and the factor drops to 4.75 when $k \geq 8$. In fact, a closer examination of the proofs in their paper actually implies an asymptotic stretch factor of $2 + O(k^{-1})$. None of YY_k with other k values have been proved or disproved to be spanners. We note here that some of the aforementioned work [18, 9] focused on *UDGs (unit disk graphs)*. But their arguments can be easily translated to general planar point sets as well. ¹

¹ Suppose a spanning property holds for any UDG. For a general set of points, we first scale it so that its diameter is less than 1. We can see that the UDG defined over the scaled set is a complete graph. So the spanning property also holds for the set of points.

In this paper, we improve the current knowledge of Yao-Yao graphs and make a step towards the resolution of Conjecture 1, by showing that almost all Yao-Yao graphs with even k are geometric spanners for k large enough. Formally, our results is as follows:

► **Theorem 2.** *For any $k \geq 42$, $\mathbb{Y}\mathbb{Y}_{2k}$ is a t_k -spanner, where $t_k = 6.03 + O(k^{-1})$.*

Our Technique Our proof contains two major steps.

1. (Section 3) We first introduce two classes of intermediate graphs, called *overlapping Yao graphs* (denoted as $\mathbb{O}\mathbb{Y}_k$) and *trapezoidal Yao graphs* (denoted as $\mathbb{T}\mathbb{Y}_k$). The construction of overlapping Yao graphs is similar to that of Yao graphs, except that the cones incident on a vertex overlap with each other. We can easily show that $\mathbb{O}\mathbb{Y}_k$ is a geometric spanner. The definition of trapezoidal Yao graphs is also similar to Yao graphs, but takes advantage of a shape called *curved trapezoid* (defined in Section 2). We can show that $\mathbb{O}\mathbb{Y}_k$ is a subgraph of $\mathbb{T}\mathbb{Y}_k$, implying $\mathbb{T}\mathbb{Y}_k$ is a geometric spanner as well.
2. (Section 4) In the second step, we show that $\mathbb{Y}\mathbb{Y}_{2k}$ spans $\mathbb{T}\mathbb{Y}_{2k}$ (i.e., for any $u, v \in \mathcal{P}$, the shortest u - v path in $\mathbb{Y}\mathbb{Y}_{2k}$ is at most a constant times longer than the shortest u - v path in $\mathbb{T}\mathbb{Y}_{2k}$).

Our proof makes crucial use of the properties of curved trapezoids. Roughly speaking, curved trapezoids are more flexible than triangles which were used in [3]), which is the main reason for the improvement from $\mathbb{Y}\mathbb{Y}_{6k}$ to more general $\mathbb{Y}\mathbb{Y}_{2k}$.

Related Works Replacing the Euclidean distance $|\cdot|$ by a power $|\cdot|^\kappa$ with a constant $\kappa \geq 2$ leads to the definition of *power spanners*. Since the power of length models the energy consumed in wireless transmissions, power spanners have important implications in wireless networking applications. In this setting, Yao-Yao graphs $\mathbb{Y}\mathbb{Y}_k$ have been proved to be power spanners for any $\kappa \geq 2$ when $k > 6$ [14, 22]. It is clear that when a graph is a geometric spanner, it must also be a power spanner (See [17, Lemma 1]), however the reverse does not hold.

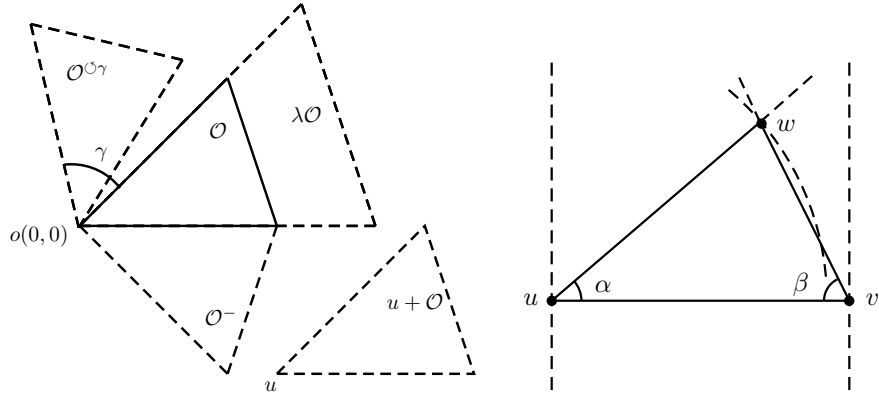
We also note that neither Yao graphs nor Yao-Yao graphs can be guaranteed to be planar graphs [22, 15], whereas Delaunay triangulation provides another type of spanner which is planar but without bounded degree [12, 4]. In order to facilitate network design in certain applications, some previous work [6, 19] made use of both Yao graphs and Delaunay graphs to produce degree-bounded and planar geometric spanners.

The paper is organized as follows. We introduce some standard notations and useful tools, including the shape of curved trapezoid, in Section 2. We introduce overlapping Yao graphs, trapezoidal Yao graphs, and prove their spanning properties in Section 3. We prove our main result in Section 4. Finally, we conclude with some future work in Section 5.

2 Preliminaries

\mathcal{P} is the underlying set of points in \mathbb{R}^2 . $D(a, \rho)$ denotes an open disk centered at point a with radius ρ . The boundary and closure of a region R are denoted by ∂R and \overline{R} , respectively. Let $S(a, \rho) = \partial D(a, \rho)$ be the circle centered at a with radius ρ . The length of shortest u - v path in a graph G is denoted by $d_G(u, v)$.

On \mathbb{R}^2 , a point u with coordinates (x, y) is denoted by $u(x, y)$. Let $o(0, 0)$ be the origin of \mathbb{R}^2 . The positive direction of x -axis is fixed as the polar axis throughout the construction and analysis. For a point $a \in \mathbb{R}^2$, we use x_a to denote its x -coordinate and y_a its y -coordinate. We use $\varphi(uv)$ to represent the polar angle of vector \overrightarrow{uv} . The angle computations are all under the modulo of 2π , and angle subtraction is regarded as the



■ **Figure 1** Left: Affine transformations. Right: Proof for Lemma 3.

counterclockwise difference. A cone between polar angles $\gamma_1 < \gamma_2$ with apex at the origin is denoted as $C(\gamma_1, \gamma_2) = \{u \mid \varphi(ou) \in [\gamma_1, \gamma_2]\}$.

It is also necessary to introduce some notations of standard affine transformations on a geometric object \mathcal{O} in the plane:

- (Dilation) If \mathcal{O} is uniformly scaled by factor λ with the origin as the center, the result is denoted by $\lambda\mathcal{O} = \{\lambda z \mid z \in \mathcal{O}\}$.
- (Translation) If \mathcal{O} is translated so that the original point goes to point u , the result is denoted by $u + \mathcal{O} = \{u + z \mid z \in \mathcal{O}\}$.
- (Rotation) If \mathcal{O} rotated an angle γ counterclockwise with respect to the origin, the result is denoted by $\mathcal{O}^{\circ\gamma}$.
- (Reflection) If \mathcal{O} is reflected through the x -axis, the result is denoted by \mathcal{O}^- .

By the above notations, we can denote the cone with apex u by $u + C(\gamma_1, \gamma_2)$ (abbreviated as $C_u(\gamma_1, \gamma_2)$).

Geometric Inequalities

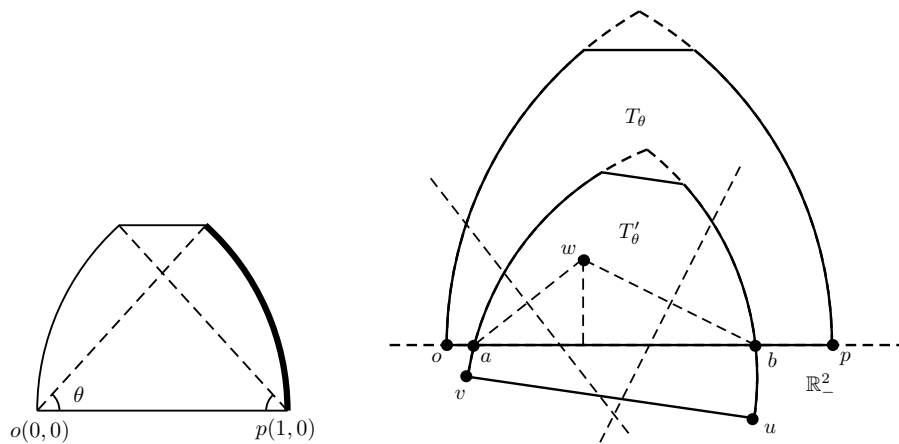
In order to attain a constant stretch factor for Yao graphs and their variants, one often needs to bound a certain geometric ratio. Here we present a simple yet general lemma for this purpose. Let the *open strip* on the segment uv be the collection of points

► **Lemma 3.** *Suppose $\tau \geq 1$ is a constant. Let w be a point with $\angle wuv, \angle wvu \in [0, \pi/2)$ (see Figure 1). When $\tau|vw| < |uv|$, the following statements about the ratio $|uw|/(|uv| - \tau|vw|)$ hold:*

1. *If w is restricted within a compact segment of an arc centered at u , the ratio is maximized when $|vw|$ is the largest;*
2. *If w is restricted within a compact segment of a ray from v , the ratio is maximized when $|vw|$ is the largest;*
3. *If w is restricted within a compact segment of a ray originated from u , the maximum ratio is achieved when w makes $|uw|$ the largest or smallest;*

Proof. The first statement is straightforward since both $|uv|$ and $|uw|$ are fixed. Now, we show the last two properties. Let $\alpha = \angle wuv$ and $\beta = \angle wvu$. By the law of sines and the fact that $\sin(\alpha + \beta) = \sin\alpha \cos\beta + \cos\alpha \sin\beta$, we can see that

$$\frac{|uw|}{|uv| - \tau|vw|} = \frac{\sin\beta}{\sin(\alpha + \beta) - \tau \sin\alpha} = \frac{1}{\cos\alpha - \sin\alpha \cdot (\tau - \cos\beta) / \sin\beta}. \quad (1)$$



■ **Figure 2** Left: The curved trapezoid. The critical arc is shown in bold. Right: An illustration of Lemma 6 with its proof.

One can see the ratio is maximized when α is maximized, which implies the second statement. Moreover, $(\tau - \cos \beta) / \sin \beta$ is a convex function of β for $\beta \in (0, \pi/2)$. Hence, it is maximized when β is maximized or minimized, which implies the last statement. ◀

Due to Lemma 3, to compute an upper bound for $|uw| / (|vw| - |vw|)$ in a region, it suffices to consider a small number of extreme positions. In particular, the following corollary is an immediately consequence, which is an improvement of a classical result mentioned in [8]:

► **Corollary 4.** $R = \overline{D(u, |uw|) \cap C_u(\gamma_1, \gamma_2)}$ is a sector with apex u and with v on its arc. Suppose $\alpha = \max\{\varphi(uv) - \gamma_1, \gamma_2 - \varphi(uv)\} < \pi/3$. Then, for all $w \in R \setminus \{u\}$, it holds that

$$\frac{|uw|}{|vw| - |vw|} \leq \left(1 - 2 \sin \frac{\alpha}{2}\right)^{-1}.$$

Proof. Take $\tau = 1$ in Lemma 3. By considering the rays from u and the arcs centered at u , and applying the first and third cases in Lemma 3, we can see that the ratio can only be maximized when w is at the two corners of the sector with $\beta = (\pi - \alpha)/2$, or when w approaches u with $\beta = 0$. The two upper bounds in equality 1 in these cases are $(1 - 2 \sin(\alpha/2))^{-1}$ and $(\cos \alpha)^{-1}$, and the former one is larger. ◀

Curved Trapezoid T_θ

To construct the trapezoidal Yao Graphs TY_k , we need to define an open shape, called *curved trapezoid*, as follows.

► **Definition 5** (Curved Trapezoid T_θ). Fix two points $o(0, 0)$ and $p(1, 0)$. Given $\theta \in [\pi/4, \pi/3)$, we define the curved trapezoid T_θ as:

$$T_\theta = \{u(x, y) \mid 0 < x < 1, 0 < y < \sin \theta, |ou| < 1, |pu| < 1\}.$$

Intuitively, it is the convex hull of two sectors with apices at o and p respectively. We regard T_θ as a shape attached to the origin o , and the closed arc not incident on o is called the *critical arc*. See Figure 2 for an example.

We list some useful properties of T_θ here. It is straightforward to show that T_θ is symmetric with respect to the vertical line $x = \frac{1}{2}$. For any $u \in T_\theta$ it holds that $0 < \varphi(ou) < \pi/2$. If u is

on the critical arc, it holds that $0 < \varphi(ou) < \theta$. The following crucial lemma, illustrated in Figure 2, is also an immediate consequence from the definition.

► **Lemma 6.** *Denote \mathbb{R}_-^2 as the lower half-plane $\{(x, y) \mid y \leq 0\}$. Consider any two points $u, v \in \mathbb{R}_-^2$ satisfying $0 < x_u < 1$, $|\varphi(uv) - \pi| < \frac{1}{6}\pi$, and $|ou|, |pv| \in [|uv|, 1)$. We construct a similar shape $T'_\theta := u + |uv|(T_\theta^-)^{\odot\varphi(uv)}$. We have that $T'_\theta - T_\theta$ is completely contained in lower half plane \mathbb{R}_-^2 .*

Proof. We first consider the extreme case when $\theta = \pi/3$. Since $u, v \in \mathbb{R}_-^2$, if the two arcs of T'_θ do not intersect with the line $y = 0$, then T_θ is fully contained in \mathbb{R}_-^2 and the proof is done.

Now suppose the two intersections are a, b , illustrated in the RHS of Figure 2. Notice that $|ua| = |uv| \leq |ou|$ and $|vb| = |uv| \leq |pv|$. Combining with the condition that $0 < x_u < 1$, we can see that both a and b lie in the segment op . For any point $w \in T'_\theta - \mathbb{R}_-^2$, it suffices to prove $|ow|, |pw| < 1$ so that w is in T_θ . This is done by examining the perpendicular bisector of aw and bw : since $|ua| > |uw|$, u is in the upper half-plane of the bisector of aw , and so is p . Thus $|pw| < |pa| \leq |op| = 1$. The same arguments hold for $|ow| < 1$.

The above shows that $T'_\theta - T_\theta \subset \mathbb{R}_-^2$ when $\theta = \pi/3$, and if θ is smaller, we only need to show that the distance $d(w, op)$ from w to line $y = 0$ is less than $\sin \theta$. This is done by the observation that $d(w, ab) \leq d(w, uv)$ in T'_θ , and $d(w, uv) < |uv| \sin \theta < \sin \theta$. This completes the proof for Lemma 6. ◀

3 Overlapping Yao Graphs and Trapezoidal Yao Graphs

In this section we consider two variants of Yao graphs, overlapping Yao graphs and trapezoidal Yao graphs.

► **Definition 7** (Overlapping Yao Graph OY_k). Let $\gamma = \left\lceil \frac{k}{4} \right\rceil \frac{2\pi}{k}$. For every $u \in \mathcal{P}$ and $j = 0, \dots, k-1$, select shortest \vec{uv} with $v \in C_u(2j\pi/k, 2j\pi/k + \gamma)$. The chosen edges form the *overlapping Yao graph* $\text{OY}_k(\mathcal{P})$.

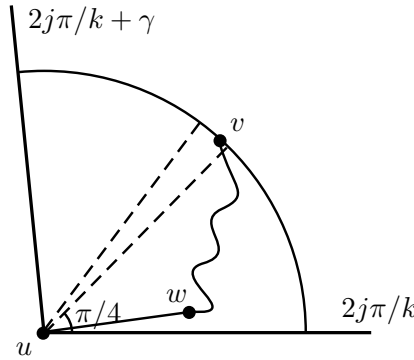
The angle γ in the definition is actually the smallest multiple of $2\pi/k$ which is no less than $\pi/2$. We note here that the term ‘‘overlapping’’ comes from the fact that the cones with the same apex overlap with each other, while in the original Yao graphs they are disjoint. First we claim that OY_k is a spanner when k is large.

► **Lemma 8.** *If $k > 24$, then OY_k is a τ_k -spanner where $\tau_k = \left(1 - 2 \sin\left(\frac{\pi}{k} + \frac{\pi}{8}\right)\right)^{-1}$.*

Proof. We prove $d_{\text{OY}}(u, v) \leq \tau_k |uv|$ by induction on the length $|uv|$ for $u, v \in \mathcal{P}$. Notice that it is always possible to find j so that $v \in C_u(2j\pi/k + \pi/4, 2(j+1)\pi/k + \pi/4)$. See Figure 3 for an illustration. This cone is contained in $C_u(\gamma_1, \gamma_2)$, where $\gamma_1 = 2j\pi/k$ and $\gamma_2 = 2j\pi/k + \gamma$, since $k > 24$ and thus $\gamma \geq \pi/2$. If \vec{uv} is the shortest in $C_u(\gamma_1, \gamma_2)$, then $\vec{uv} \in \text{OY}_k$ and we are done with the proof.

Now, suppose that in the construction of construction of OY_k , we choose \vec{uv} for $C_u(\gamma_1, \gamma_2)$ with $w \neq v$. Since $k > 24$, one shall see that

$$\begin{aligned} \alpha &:= \max\{\varphi(uv) - \gamma_1, \gamma_2 - \varphi(uv)\} \\ &\leq \max\{2\pi/k + \pi/4, \gamma - \pi/4\} = 2\pi/k + \pi/4 < \pi/3. \end{aligned}$$



■ **Figure 3** Illustration of the proof of Lemma 8. The outer cone is $C_u(\gamma_1, \gamma_2)$ where $\gamma_1 = 2j\pi/k$ and $\gamma_2 = 2j\pi/k + \gamma$. The cone defined by two dashed lines is $C_u(2j\pi/k + \pi/4, 2(j+1)\pi/k + \pi/4)$.

Hence, we can apply Corollary 4 on the sector $R = \overline{D(u, |uv|) \cap C_u(\gamma_1, \gamma_2)}$, which claims

$$\frac{|uw|}{|uv| - |vw|} \leq \tau_k = \left(1 - 2 \sin \frac{\alpha}{2}\right)^{-1}.$$

Since $\alpha < \pi/3$, we have $|vw| < |uv|$. By the induction hypothesis, we can see that

$$d_{OY}(u, v) \leq |uw| + d_{OY}(v, w) \leq |uw| + \tau_k |vw| \leq \tau_k (|uv| - |vw|) + \tau_k |vw| = \tau_k |uv|,$$

which completes the proof. ◀

We also note that Barba et al. proposed the so-called *continuous Yao graphs* in [1], which play a similar role as OY_k . By adapting their method, it might be possible to prove a slightly smaller stretch factor for OY_k . However the constant is not our primary goal in this paper, and we leave it to the future work.

Now we define the trapezoidal Yao graphs based on the curved trapezoid T_θ (Definition 5).

► **Definition 9** (Trapezoidal Yao Graph TY_k). Let $\theta = \left\lceil \frac{k}{8} \right\rceil \frac{2\pi}{k}$. For every $u \in \mathcal{P}$ and $j = 0, \dots, k-1$, define two curved trapezoids

$$\Gamma_{j1} = (T_\theta)^{\odot 2j\pi/k} \quad \text{and} \quad \Gamma_{j2} = (T_\theta^-)^{\odot 2j\pi/k}.$$

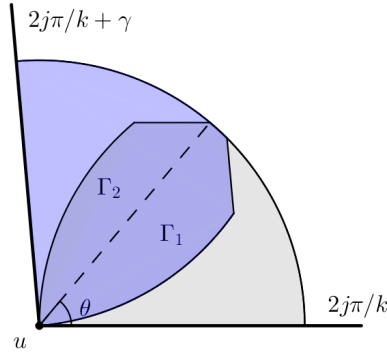
Note that their bottom sides lie on the ray of angle $2j\pi/k$. For each $i = 1, 2$, we do the following: We grow a curved trapezoid $u + \lambda\Gamma_{ji}$ by gradually increasing λ (initially 0) until its boundary hits some point v . If the critical arc hits v , we select \vec{uv} . Otherwise, we select nothing. All the selected edges form the graph $TY_k(\mathcal{P})$.

► **Lemma 10.** For any integer $k > 24$, TY_k is a τ_k -spanner where $\tau_k = \left(1 - 2 \sin \left(\frac{\pi}{k} + \frac{\pi}{8}\right)\right)^{-1}$.

Proof. Note that in Definition 5, we require that $\theta \in [\pi/4, \pi/3)$. When $k > 24$, we can see that

$$\frac{\pi}{4} \leq \theta = \left\lceil \frac{k}{8} \right\rceil \frac{2\pi}{k} \leq \frac{k+7}{k} \cdot \frac{\pi}{4} < \frac{\pi}{3}.$$

Hence, the value θ in Definition 9 satisfies the requirement of θ in Definition 5.



■ **Figure 4** Illustration for Lemma 10: Two curved trapezoids cover a sector.

We show that the overlapping Yao graph OY_k is actually a subgraph of TY_k , from which the lemma is an immediate consequence. Given any j and one cone $C_u(2j\pi/k, 2j\pi/k + \gamma)$, we choose two copies of T_θ : $\Gamma_1 = (T_\theta)^{\circlearrowleft 2j\pi/k}$, and $\Gamma_2 = (T_\theta^-)^{\circlearrowleft 2j\pi/k + \gamma}$. See Figure 4. Since $2\theta \geq \gamma \geq \pi/2$, it is clear that Γ_1 and Γ_2 exactly cover the interior of sector $D(o, 1) \cap C_o(2j\pi/k, 2j\pi/k + \gamma)$. Now, for any edge $\vec{uv} \in OY_k$ selected within this cone, both $u + |uv|\Gamma_1$ and $u + |uv|\Gamma_2$ must have empty interior ($|uv|$ is the shortest within the cone). Therefore, if $\varphi(uv) - 2j\pi/k \leq \theta$, it should be selected into TY_k with respect to Γ_1 . Otherwise it should be selected with respect to Γ_2 . This implies that OY_k is a subgraph of TY_k , and by Lemma 8, TY_k is a τ_k -spanner as well. ◀

4 Yao-Yao Graphs YY_{2k} are Spanners

In this section, we prove our main result that YY_{2k} has a constant stretch factor for large k , by show that YY_{2k} spans TY_{2k} .

To begin with, we prove an important property of TY_{2k} , which will be useful later. The property can be seen as an analogue of the property of Θ_6 shown in [3, Lemma 2]. One of the reasons we can improve YY_{6k} to more general YY_{2k} is that we can take advantage of the curved trapezoid rather than the regular triangle. We state this property by assuming, that without loss of generality, a curved trapezoid T_θ is placed at its normal position, i.e., T_θ lies in the first quadrant with two vertices $o(0, 0)$ and $p(1, 0)$. From now on, we work with trapezoidal Yao graphs TY_{2k} . Hence, the associated parameter θ (see Definition 9) is

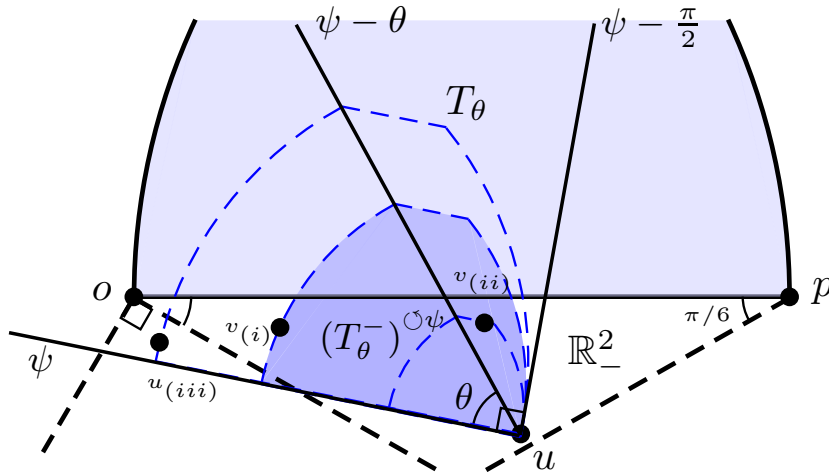
$$\theta = \left\lceil \frac{2k}{8} \right\rceil \frac{2\pi}{2k} = \left\lceil \frac{k}{4} \right\rceil \frac{\pi}{k}.$$

► **Lemma 11.** *Suppose $o \in \mathcal{P}$ and T_θ has an empty interior. If there is a point $a \in \mathcal{P}$ such that $0 < x_a < 1$, $y_a \leq 0$ and $0 < \varphi(ap) < \pi/6$, then*

$$d_{TY}(oa) \leq x_a + (2\tau_{2k} + 1)|y_a|$$

where τ_k is as defined in Lemma 10, and there is a path in TY_{2k} from a to o where each edge is shorter than $|oa|$.

Proof. Note that simply applying Lemma 10 is insufficient to achieve the guarantee. Instead, we present an iterative algorithm for finding a path from a to o . The path found by the iterative algorithm is not necessarily a shortest path from a to o . Nevertheless, we can bound its length as in the lemma.



■ **Figure 5** Illustration of three cases in the proof of Lemma 11.

Let u be the current point in \mathcal{P} ; Initially u is set to be a .

While $u \neq o$ and $\varphi(ou) > -\frac{\pi}{6}$ do

Let $\psi = \min\{j\pi/k \mid j\pi/k > \varphi(ou), j = 0, 1, \dots, 2k - 1\}$;

Grow a curved trapezoid $u + \lambda(T_\theta^-) \circ \psi$ until its boundary hits some point v .

If $v \in C_u(\psi - \frac{\pi}{2}, \psi - \theta)$:

(i) TY_{2k} must contain the edge \vec{uv} . We add \vec{uv} to our path;

Otherwise:

(ii) Add the path from u to v in OY_{2k} constructed in Lemma 8;

Set the current point u to be v and proceed to the next iteration.

If now $u = o$, the path is already found;

(iii) Otherwise take the path from u to o in OY_{2k} constructed in Lemma 8.

See Figure 5 for an illustration of the three cases (i),(ii) and (iii). Let $l(u)$ be the length of the path from u to o generated by the algorithm above. To analyze its behaviour, we define a potential function

$$\Phi(u) = x_u + (2\tau_{2k} + 1)|y_u| - l(u).$$

We claim that the potential function never increases as the algorithm proceeds and is eventually 0. The potential only changes in the three labeled steps (i),(ii) and (iii). When executing step (i) and (ii), it is clear that $\varphi(ou) \in \left(\frac{5}{6}\pi, \pi\right]$, $\varphi(up) \in \left[0, \frac{1}{6}\pi\right)$. Therefore ψ also falls in the range $\left(\frac{5}{6}\pi, \pi\right]$. Moreover, v must be contained in \mathbb{R}_-^2 due to Lemma 6, that is, $y_v \leq 0$.

■ In step (i), v is simply the nearest neighbor in the cone $C_u(\psi - \theta, \psi)$. Since $\varphi(up) < \pi/6$, we know $|uv| < |vp|$. Since $\psi - \theta > \pi/2$ and $\psi \leq \pi$, we can see that $x_v \leq x_u$ and $|y_v| < |y_u|$. Hence the change in potential is

$$\begin{aligned} \Delta\Phi &= \Phi(v) - \Phi(u) = |uv| - (x_u - x_v) - (2\tau_{2k} + 1)(|y_u| - |y_v|) \\ &\leq |uv| - (x_u - x_v) - (|y_u| - |y_v|) \leq 0. \end{aligned}$$

- In step (ii), since $\varphi(uv) \in [\psi - \frac{\pi}{2}, \psi - \theta)$, we know $|\varphi(uv) - \pi/2|$ is at most $\pi/4$, so $|y_v| < |y_u|$ and $|x_v - x_u| < |y_u| - |y_v|$. That further implies $|uv| < 2(|y_u| - |y_v|)$, and thus $d_{\text{TY}}(uv) \leq \tau_{2k}|uv| < 2\tau_{2k}(|y_u| - |y_v|)$. Therefore the change in potential is

$$\begin{aligned} \Delta\Phi &= \Phi(v) - \Phi(u) = d_{\text{TY}}(uv) - (x_u - x_v) - (2\tau_{2k} + 1)(|y_u| - |y_v|) \\ &= (d_{\text{TY}}(uv) - 2\tau_{2k}(|y_u| - |y_v|)) + (x_v - x_u - (|y_u| - |y_v|)) \leq 0. \end{aligned}$$

- In step (iii), suppose the node arrived before u is u' , with $\varphi(u'o) > \frac{5}{6}\pi$. Since $\overrightarrow{u'u}$ is chosen, it must be the case that $|u'u| \leq |u'o|$. It is immediate that $\varphi(uo) \in \left(\frac{\pi}{3}, \frac{5}{6}\pi\right]$, and thus $|uo| \leq 2|y_u|$, $-x_u \leq |y_u|$. Therefore, we have that

$$\Delta\Phi = \Phi(o) - \Phi(u) = (d_{\text{TY}}(uo) - 2\tau_{2k}|y_u|) + (-x_u - |y_u|) \leq 0.$$

Now that $\Phi(o) = 0$, and the above arguments show that the potential cannot increase during the path from u to o , we can conclude that $\Phi(a) \geq 0$. That is, $l(a) \leq x_a + (2\tau_{2k} + 1)|y_a|$.

Also notice that in steps (i) and (ii), it is ensured that $|uv| < |ou|$ and $|ov| < |ou|$ since v is contained in the curved trapezoid. On the other hand, the paths from OY_{2k} in steps (ii) and (iii), which are constructed according to Lemma 8, contains only edges shorter than the direct distance. Thus the edges we selected are all shorter than $|oa|$. ◀

► **Lemma 12.** *On a Yao-Yao graph $\text{YY}_{2k}(\mathcal{P})$ with $k \geq 42$, if $\overrightarrow{uv} \in \text{TY}_{2k}$, then $d_{\text{YY}}(uv) \leq \tau'_k|uv|$, where $\tau'_k = \sqrt{2} + O(k^{-1})$ is a constant depending only on k .*

Proof. Let $\tau'_k \geq 1$ be a constant to be fixed later. Our proof is by induction on the length $|uv|$. The base case is simple: the shortest edge is in both TY_{2k} and YY_{2k} . Now, consider an edge $\overrightarrow{uv} \in \text{TY}_{2k}$. Without loss of generality, we assume that $|uv| = 1$. We further assume that T_θ , which generates \overrightarrow{uv} in TY_{2k} , in its normalized position, i.e., u is $o(0, 0)$ and another vertex is $p(1, 0)$. See Figure 6. Noticing that θ is a multiple of π/k , we can see that v must be the nearest neighbor of u in its corresponding cone of YY_{2k} .

If $\overrightarrow{uv} \in \text{YY}_{2k}$, then $d_{\text{YY}}(uv) = |uv|$ and we are done with the proof. Otherwise, there must be another edge $\overrightarrow{vw} \in \text{YY}_{2k}$ where u and w are in the same v -apex cone, and $|vw| \leq |uv|$ (this is due to the construction of Yao-Yao graph). It follows that $|uw| < |uv|$ since $k \geq 42$.

Now, we prove by induction that $d_{\text{YY}}(uv) \leq \tau'_k|uv|$. Now noticing that T_θ has an empty interior, there are only two cases for w we need to consider. See Figure 6 for an example.

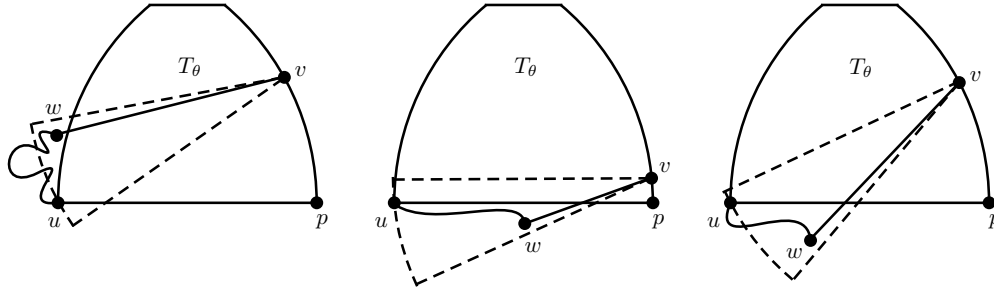
1. $y_w > 0$: See the left part of Figure 6. By Lemma 3, we can see that within all possible positions of w , $|vw|/(|uv| - \tau_{2k}|uw|)$ can only be maximized when $|vw| = |uv|$ or when w is on the left boundary of T_θ . Since when $k \geq 42$, it holds $2\tau_{2k} \sin \frac{\pi}{2k} < 1$, therefore

$$\frac{|vw|}{|uv| - \tau_{2k}|uw|} \leq \frac{1}{1 - 2\tau_{2k} \sin \frac{\pi}{2k}}.$$

Hence, if $\tau'_k \geq 1/(1 - 2\tau_{2k} \sin \frac{\pi}{2k})$, we have that $|vw| \leq \tau'_k(|uv| - \tau_{2k}|uw|)$. Consider the shortest path from u to w in TY_{2k} . Notice that $d_{\text{TY}}(uw) \leq \tau_{2k}|uw| < |uw|$. Applying the induction hypothesis to every edge of the shortest path, we can see $d_{\text{YY}}(uw) \leq \tau'_k d_{\text{TY}}(uw)$. Combining the above inequalities, we can finally obtain that

$$d_{\text{YY}}(uv) \leq d_{\text{YY}}(uw) + |vw| \leq \tau'_k(d_{\text{TY}}(uw) + |uv| - \tau_{2k}|uw|) \leq \tau'_k|uv|.$$

2. $y_w \leq 0$: See the middle and right parts of Figure 6. Consider the two cases of angle $\varphi(uw)$:



■ **Figure 6** Proof for Lemma 12. Left: w is in the upper half-plane; Middle: w is in the lower half-plane and $\varphi(uv) \leq \pi/k$; Right: w is in the lower half-plane and $\varphi(uv) > \pi/k$.

- If $0 \leq \varphi(uv) \leq \pi/k$, then $\varphi(wp) \leq \varphi(wv) \leq \pi/k$;
- If $\pi/k < \varphi(uv) \leq \theta$, then $\angle upv \leq \frac{(k-1)\pi}{2k} \leq \angle uvw$. Thus p is outside the circumcircle of $\triangle uvw$, and $\varphi(wp) = \angle upw \leq \angle uvw \leq \pi/k$.

Therefore in both cases, we have $0 < x_w < x_p$ and $0 \leq \varphi(wp) \leq \pi/k$. We notice the following two inequalities:

$$|y_w| \leq (x_p - x_w) \tan \varphi(wp) \leq (|uv| - x_w) \tan \frac{\pi}{k},$$

$$|vw| \leq (x_v - x_w) \sec \varphi(wv) \leq (|uv| - x_w) \sec \left(\theta + \frac{\pi}{k} \right).$$

Consider the path from w to u as we constructed in Lemma 11 (w and u correspond to a and o in the lemma, respectively). Since all edges in the constructed path are shorter than $|wu|$ (thus shorter than $|uv|$ as well), we can apply the induction hypothesis to get $d_{YY}(uw) \leq \tau'_k d_{TY}(uw)$. Applying Lemma 11, we have

$$\begin{aligned} d_{YY}(uv) &\leq d_{YY}(uw) + |vw| \leq \tau'_k d_{TY}(uw) + |vw| \\ &\leq \tau'_k(x_w + (2\tau_{2k} + 1)|y_w|) + |vw| \\ &\leq \tau'_k x_w + \left(\tau'_k(2\tau_{2k} + 1) \tan \frac{\pi}{k} + \sec \left(\theta + \frac{\pi}{k} \right) \right) (|uv| - x_w). \end{aligned}$$

Suppose we choose τ'_k such that $\tau'_k(2\tau_{2k} + 1) \tan \frac{\pi}{k} + \sec(\theta + \frac{\pi}{k}) \leq \tau'_k$, (which is equivalent to $\tau' \geq ((1 - (2\tau_{2k} + 1) \tan \frac{\pi}{k}) \cos(\theta + \frac{\pi}{k}))^{-1}$). Note that the above holds also because $(2\tau_{2k} + 1) \tan \frac{\pi}{k} < 1$ when $k \geq 42$. Finally, we can conclude that

$$d_{YY}(uv) \leq \tau'_k |uv|.$$

We can conclude from the above two cases that τ'_k can be chosen to be $\sec \frac{\pi}{4} + O(k^{-1}) = \sqrt{2} + O(k^{-1})$. ◀

Combining Lemma 10 and 12, with the observation that $\tau_k = (1 - 2 \sin(\pi/8))^{-1} + O(k^{-1})$, we can get our main result that almost all YY_{2k} are spanners.

▶ **Theorem 2 (restated).** For any integer $k \geq 42$, YY_{2k} is a t_k -spanner, where $t_k = \tau'_k \tau_{2k} = \sqrt{2}(1 - 2 \sin(\pi/8))^{-1} + O(k^{-1}) = 6.03 + O(k^{-1})$.

5 Conclusion and Future Work

In this paper we proved that Yao-Yao graphs YY_{2k} are geometric spanners for k large enough, making a positive progress to the long-standing Conjecture 1. For Yao-Yao graphs with odd

parameters, the resolution of the conjecture is still elusive and seems to require additional new ideas.

We did not try very hard to optimize the constant stretch ratio for different k values. Hence, the constant claimed in Theorem 2 may well be further improved. One potential approach is to use techniques developed in [1]. Obtaining tighter bounds (and lower bounds as well!) is left as an interesting future work.

We propose some other potential future directions, which are interesting in their own rights and might lead to sparse spanners with bounded degrees and small stretch factors.

- Consider the variant of Yao-Yao graphs where the cones are not divided uniformly. One could expect that such variants are spanners if the apex angles of the cones are all small. It seems that our techniques in the paper can be adapted to this situation if the separated cones are *centrosymmetric*: every separation ray of polar angle φ has a corresponding one at polar angle $\pi + \varphi$. But the more general case is still open.
- Instead of insisting on one polar division for every node, we can let each point choose its polar axis individually by uniformly and independently randomizing a direction. We conjecture that such graphs are also spanners (in expectation or with high probability) for k large enough.

References

- 1 Luis Barba, Prosenjit Bose, Jean-Lou De Carufel, Mirela Damian, Rolf Fagerberg, André van Renssen, Perouz Taslakian, and Sander Verdonschot. Continuous Yao graphs. In *Proceedings of the 26th Canadian Conference on Computational Geometry, CCCG 2014, Halifax, Nova Scotia, Canada, 2014*, 2014.
- 2 Luis Barba, Prosenjit Bose, Mirela Damian, Rolf Fagerberg, Wah Loon Keng, Joseph O'Rourke, André van Renssen, Perouz Taslakian, Sander Verdonschot, and Ge Xia. New and improved spanning ratios for Yao graphs. *JoCG*, 6(2):19–53, 2015.
- 3 Matthew Bauer and Mirela Damian. An infinite class of sparse-Yao spanners. In *Proceedings of the Twenty-Fourth Annual ACM-SIAM Symposium on Discrete Algorithms*, pages 184–196. SIAM, 2013.
- 4 Prosenjit Bose, Paz Carmi, Sebastien Collette, and Michiel Smid. On the stretch factor of convex delaunay graphs. *Journal of computational geometry*, 1(1):41–56, 2010.
- 5 Prosenjit Bose, Mirela Damian, Karim Douïeb, Joseph O'rourke, Ben Seamone, Michiel Smid, and Stefanie Wuhler. $\pi/2$ -angle Yao graphs are spanners. *International Journal of Computational Geometry & Applications*, 22(01):61–82, 2012.
- 6 Prosenjit Bose, Joachim Gudmundsson, and Michiel H. M. Smid. Constructing plane spanners of bounded degree and low weight. *Algorithmica*, 42(3-4):249–264, 2005.
- 7 Paul Chew. There is a planar graph almost as good as the complete graph. In *Proceedings of the second annual symposium on Computational geometry*, pages 169–177. ACM, 1986.
- 8 Artur Czumaj and Hairong Zhao. Fault-tolerant geometric spanners. *Discrete & Computational Geometry*, 32(2):207–230, 2004.
- 9 Mirela Damian. A simple Yao-Yao-based spanner of bounded degree. *arXiv preprint arXiv:0802.4325*, 2008.
- 10 Mirela Damian, Nawar Molla, and Val Pinciu. Spanner properties of $\pi/2$ -angle Yao graphs. In *Proc. of the 25th European Workshop on Computational Geometry*, pages 21–24. Citeseer, 2009.
- 11 Mirela Damian and Kristin Raudonis. Yao graphs span theta graphs. In *Combinatorial Optimization and Applications*, pages 181–194. Springer, 2010.

- 12 David P Dobkin, Steven J Friedman, and Kenneth J Supowit. Delaunay graphs are almost as good as complete graphs. In *Foundations of Computer Science, 1987., 28th Annual Symposium on*, pages 20–26. IEEE, 1987.
- 13 Nawar M El Molla. Yao spanners for wireless ad hoc networks. Master’s thesis, Villanova University, 2009.
- 14 Lujun Jia, Rajmohan Rajaraman, and Christian Scheideler. On local algorithms for topology control and routing in ad hoc networks. In *Proceedings of the fifteenth annual ACM symposium on Parallel algorithms and architectures*, pages 220–229. ACM, 2003.
- 15 Iyad A Kanj and Ge Xia. On certain geometric properties of the Yao-Yao graphs. In *Combinatorial Optimization and Applications*, pages 223–233. Springer, 2012.
- 16 Xiang-Yang Li. *Wireless Ad Hoc and Sensor Networks: Theory and Applications*. Cambridge, 6 2008.
- 17 Xiang-Yang Li, Peng-Jun Wan, and Yu Wang. Power efficient and sparse spanner for wireless ad hoc networks. In *Computer Communications and Networks, 2001. Proceedings. Tenth International Conference on*, pages 564–567. IEEE, 2001.
- 18 Xiang-Yang Li, Peng-Jun Wan, Yu Wang, and Ophir Frieder. Sparse power efficient topology for wireless networks. In *System Sciences, 2002. HICSS. Proceedings of the 35th Annual Hawaii International Conference on*, pages 3839–3848. IEEE, 2002.
- 19 Xiang-Yang Li and Yu Wang. Efficient construction of low weight bounded degree planar spanner. In *Computing and Combinatorics*, pages 374–384. Springer, 2003.
- 20 Giri Narasimhan and Michiel Smid. *Geometric spanner networks*. Cambridge University Press, 2007.
- 21 David Peleg and Alejandro A Schäffer. Graph spanners. *Journal of graph theory*, 13(1):99–116, 1989.
- 22 Christian Schindelhauer, Klaus Volbert, and Martin Ziegler. Geometric spanners with applications in wireless networks. *Computational Geometry*, 36(3):197–214, 2007.
- 23 Andrew Chi-Chih Yao. On constructing minimum spanning trees in k-dimensional spaces and related problems. *SIAM Journal on Computing*, 11(4):721–736, 1982.